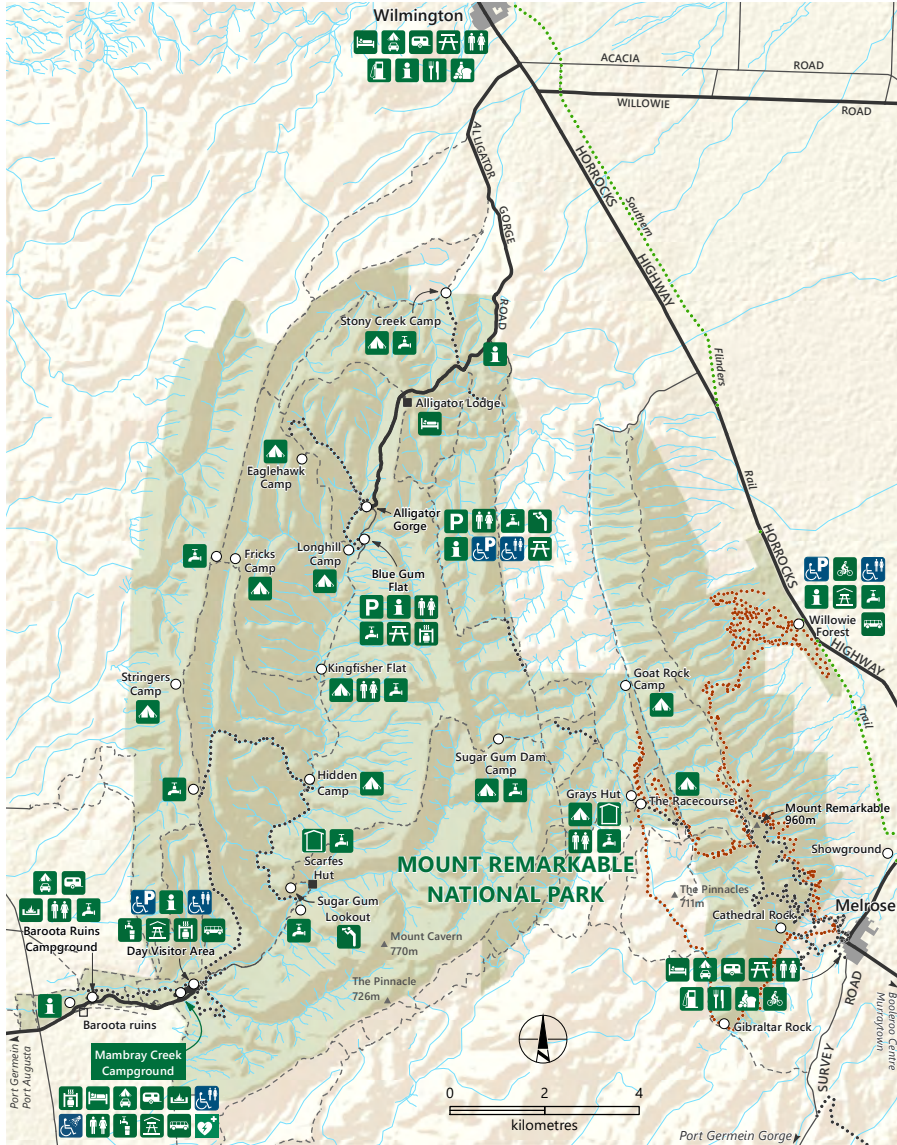
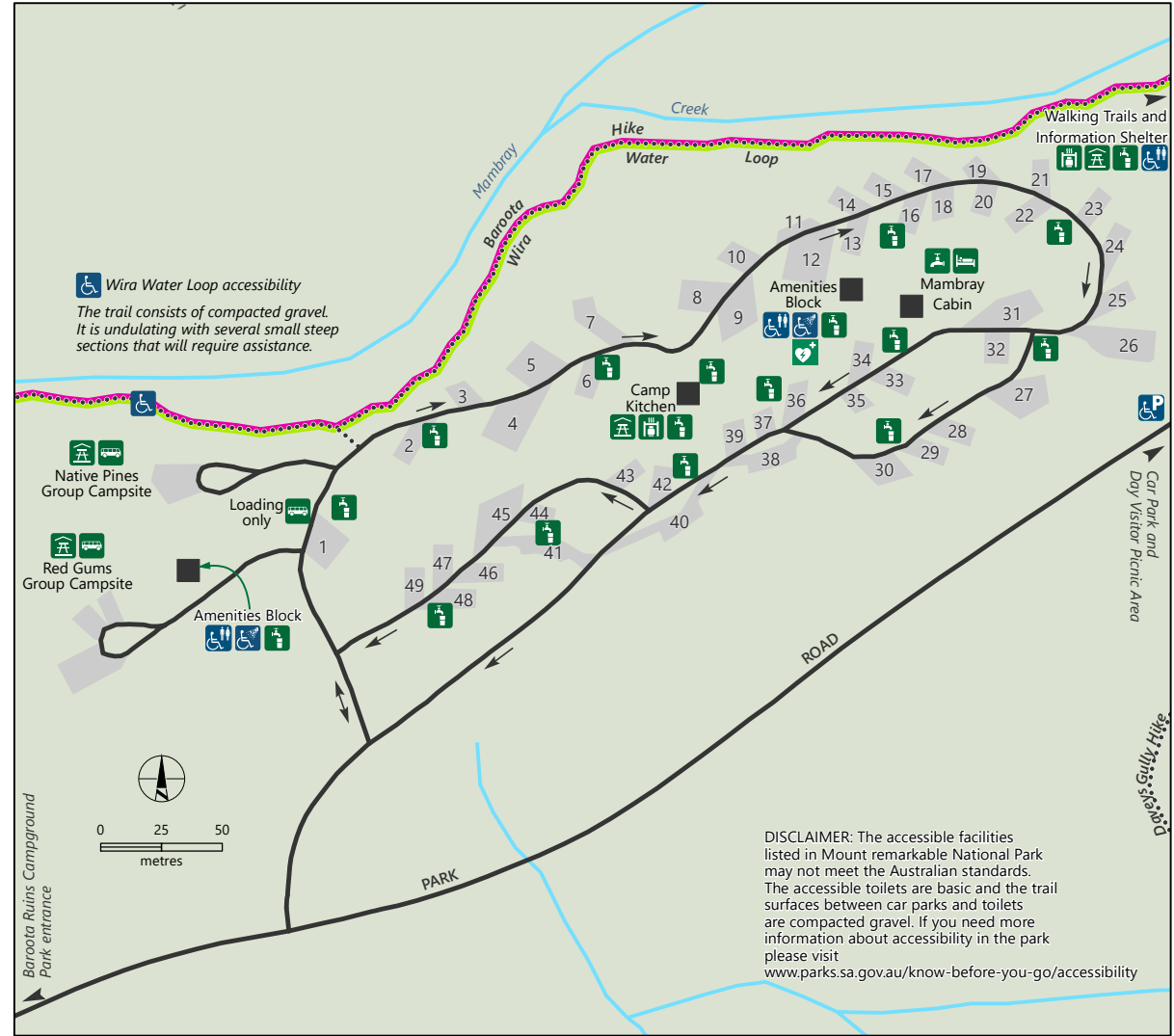


Mount Remarkable National Park



Mambray Creek Campground



DISCLAIMER: The accessible facilities listed in Mount Remarkable National Park may not meet the Australian standards. The accessible toilets are basic and the trail surfaces between car parks and toilets are compacted gravel. If you need more information about accessibility in the park please visit www.parks.sa.gov.au/know-before-you-go/accessibility



- Sealed road
- Unsealed road
- Track (Authorised vehicles only)
- Cycling trail
- Walking trail
- Shared use trail
- Mount Remarkable National Park
- Watercourse
- Campsite and number
- Baroota Hike
- Wira Water Loop
- Peak

- Automated external defibrillator
- Accessible parking
- Accessible showers
- Accessible toilets
- Accommodation
- Barbecue
- Bus parking
- Bush camping
- Bike trails
- Caravan sites
- Camp fire
- Campground
- Disabled access
- Drinking water
- Fuel
- Hut
- Information
- Lookout
- Meals
- Parking
- Picnic shelter
- Picnic table
- Rainwater
- Supplies
- Toilets

DEW does not guarantee that this map is error free. Use of the map is at the user's sole risk and the information contained on the map may be subject to change without notice. Cartography by DEW, Mapland - 2023

Book online at parks.sa.gov.au
Get the Avenza Maps app to use park maps on your phone.

For more information, contact:
Department for Environment and Water
E: parks@sa.gov.au
P: 08 8207 7700